



GMT MONTHLY MEMBERSHIP PROGRESS REPORT

Results as of: 4/30/2024

Multiple District 22

LOCATION: MARYLAND

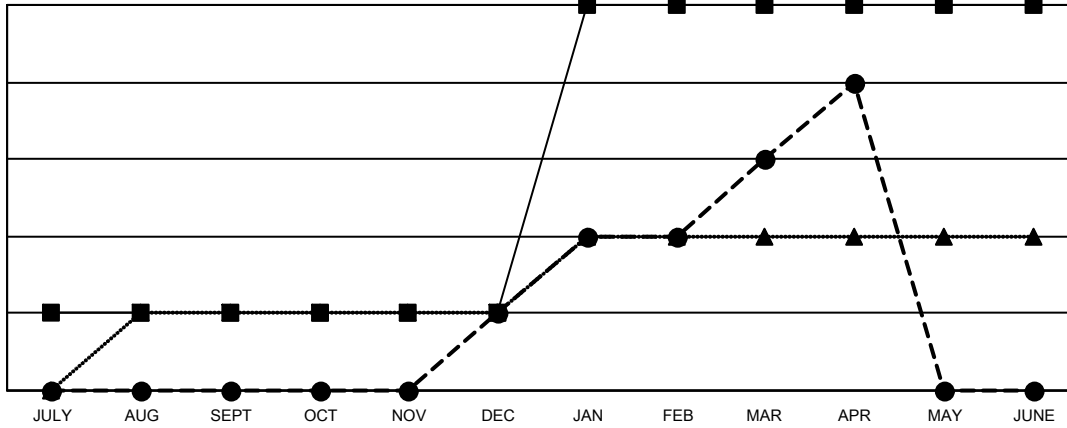
GMT: OPEN

GMT CA 1

Clubs			
RESULTS FOR 2023-2024			
QUARTER	NEW CLUB GOAL	NEW CLUBS	DROPPED CLUBS
JULY/AUG/SEPT	1	0	0
OCT/NOV/DEC	0	1	1
JAN/FEB/MAR	4	2	1
APR/MAY/JUNE	0	1	1

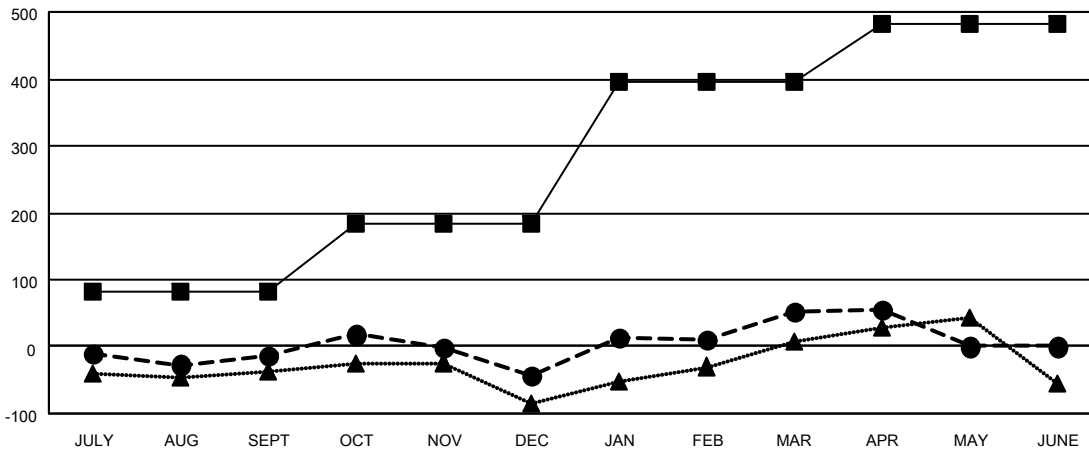
Members			
RESULTS FOR 2023-2024			
QUARTER	MEMBER GROWTH NET GOAL	MEMBER GROWTH ACTUAL	DROPPED MEMBERS ACTUAL (including transfers)
JULY/AUG/SEPT	81	153	147
OCT/NOV/DEC	102	162	185
JAN/FEB/MAR	212	248	139
APR/MAY/JUNE	87	69	58

GOALS AND ACTUAL NEW CLUBS CUMULATIVE



- - CURRENT YEAR GOALS FOR NEW CLUBS
- - CURRENT YEAR ACTUAL NEW CLUBS
- ▲ - LAST YEAR ACTUAL NEW CLUBS

GOALS AND ACTUAL MEMBERS CUMULATIVE



- - MEMBER GROWTH NET GOAL
- - MEMBER GROWTH ACTUAL
- ▲ - LAST YEAR MEMBERSHIP ACTUAL

DROPPED CLUBS: 3	121 CLUBS OF 202 ADDED 1 OR MORE NEW MEMBERS	GENDER DISTRIBUTION
		MALE 3,597 (61.58%)
		FEMALE 2,244 (38.42%)
DROPPED MEMBERS	CLICK HERE FOR CUMULATIVE MEMBERSHIP DATA	TOTAL FAMILY UNIT MEMBERS 1,070
DECEASED 99		FAMILY MEMBERS PAYING HALF DUES 559
CLUB CANCELLED 18		
OTHER 412		
TOTAL 529		